
Leigh Ledare

To you who make the springtime, I send my winter

Press release

mfc-michèle didier



Let the Good Times Roll. 1 Blond, 53 yrs old, curvy, buxom, slim, clean, petite. No diseases or drugs. Seeking healthy, honest, reliable, financially secure younger man for discreet sensual fun. Ext#1084

Leigh Ledare - solo show

To you who make the springtime, I send my winter

Exhibition from March 25 to May 21, 2022

Opening on March 24 from 6 pm to 9 pm

In the presence of Leigh Ledare.

Press contact - Simon Poulain

simon@micheledidier.com / +33 (0)6 81 54 57 76

Leigh Ledare, *Personal Commissions*, 2008/2022

Set of 10 Dry Prints

Produced and published by mfc-michèle didier in 2022

Let the Good Times Roll. 1 Blond, 53 yrs old, curvy, buxom, slim, clean, petite. No diseases or drugs. Seeking healthy, honest, reliable, financially secure younger man for discreet sensual fun. Ext#1084

Leigh Ledare

To you who make the springtime, I send my winter

"Mother died today. Or maybe it was yesterday, I don't know."

— Albert Camus, *L'Étranger*

My work was first introduced to the artworld through a series titled *Pretend You're Actually Alive*. A chronicle of my family, this project centered around my mother – a dancer who at age thirteen began a career with the New York City Ballet only to find herself, at almost fifty, in a relatively provincial city dancing at a strip club next door to her parents' apartment. On the surface this was a story of disappointment; however, not completely. She carried a humor about herself and an appetite for the absurd. And while her performance of sexual desire acted to address certain needs (financial, emotional and otherwise), her assertions toward my camera also largely amounted to a refusal of expectations put upon her – namely, her father's opinions concerning how she should behave as a daughter, mother and woman of her age.

While my work has since shifted in unexpected directions, it remains recursive. Perambulating around an ever-widening space, it circles back to themes that are intersubjective and often symptomatic.

As I contemplated what to include in this exhibition and began considering a title, I recalled a phrase I came across a number of months ago: "To you who make the spring, I send my winter." Albert Camus had penned this inscription inside a personalized copy of his final novel *The Fall*, a gift for the painter Balthus. Infamous for fetishizing the fleeting innocence and nascent sexuality of the young girls who modeled for his paintings, Balthus continuously reinvented himself, ultimately creating his own feudal paradise sequestered high in the Swiss Alps where he could safely personify the values of Traditionalism and order he believed had been ravaged by modernity. Of course, his views must be taken with a grain of salt. In contrast, the anarchistic Camus, who was raised in a working class neighborhood in Algiers by a mother who was unable to read, placed absurdity and chaos at the center of his work, railing against forms of mechanized thought he deemed intellectual suicide. Loaded with contradictions, and serving as an uncanny mirror onto our own times, Camus' epigram seemed an apt analogy for the works I will present here.

Installed surrounding the periphery of the gallery's two rooms ten poster-scale photographic portraits of me address the viewer – through eyeline, posture and text.

After finishing the work with my mother, I increasingly found her presence overbearing. Compelled to return to an earlier moment, or possibly escape that current one, I sought out surrogates to stand-in for her. I made a series that I called *Personal Commissions* by answering "Women Seeking Men" listings that echoed the ads she herself had placed in the back pages of weekly periodicals. Vowing to protect their users' anonymity, these ads nonetheless inscribed their subjects into a system of exchange – a space of compartmentalized intimacy through which to solicit sexual encounters and circulate one's self amongst strangers willing to give small amounts of financial compensation and hopefully more. I contacted these women and offered to pay each her asking fee, adding one caveat: rather than sleeping with me, she would instead photograph me inside her apartment, positioning me in whatever way she desired – standing, sitting or lying prone, clothed or unclothed, erect or not. Inverting the camera by substituting myself for these subjects, I took up a promiscuity of positions – reconfiguring the relations between mother and son; escort and john; and between artist, model and viewer. Ultimately, these portraits of me function as ciphers. Contrasting the women's confessed ambitions against the circumstances of their actual lives, these works point indirectly to structures of consumption, affirmation and judgement that determine value.

mfc-michèle didier
66 rue Notre-Dame de Nazareth, 75003 Paris, France
T + 33 (0)1 71 27 34 41 - P + 33 (0)6 09 94 13 46
info@micheledidier.com - www.micheledidier.com

Leigh Ledare - solo show

Exhibition from March 25 to May 21, 2022

Opening on March 24 from 6 pm to 9 pm

In the presence of Leigh Ledare.

Upcoming exhibitions:

Saâdane Afif - *The Fountain Archives [Index]*

From June 2 to July 21, 2022

Art Basel

From June 16 to 19, 2022

About Leigh Ledare :

Born 1976, Seattle, Washington

Lives and works in New York

Selected exhibitions include: *XX XX*, Meyer Reigger, Berlin (2021); *The Plot*, The Art Institute of Chicago (2017); the Whitney Biennial, The Whitney Museum of American Art, New York (2017); *Manifesta 11*, Zurich (2016); Leigh Ledare, *et al.*, a survey curated by Elena Filipovic at WIELS Contemporary Art Centre, Brussels (2012-2013); *How Soon is Now*, The Garage, Moscow (2010); *Ça Me Touche*, curated by Nan Goldin at Les Rencontres d'Arles, 2009; among others. Ledare was a 2017 Guggenheim Foundation Fellow and teaches in the Sculpture MFA program at Yale University.

Currently :

Love Songs, Photographies de l'intime

From March 30 to August 21, 2022

Maison Européenne de la Photographie, Paris

Leigh Ledare

To you who make the springtime, I send my winter

The revolving subjects of figuration; the painter's muse; my mother, then and before; the women from these listings and me; and even Balthus – while these represent false equivalents, they are nonetheless strangely interchangeable. In each case, implicated by their circumstances, what innocence they had has been chipped away by passing time.

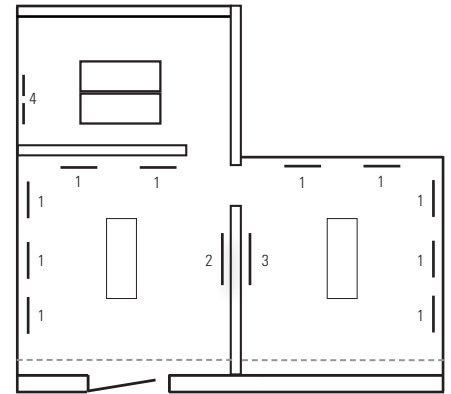
With Camus inscription in mind, my thoughts continued to return to his collaboration with Balthus, who designed the sets and costumes for the 1948 allegory *State of Siege*, a play by Camus that concerns the arrival of plague and an authoritarian regime's manipulation of fear to amass power. In contrast to Balthus' desire to transcend the present and withdraw into the innocent world of childhood, Camus' work presents no sufficient escape. Contrasted with the fantasy of Balthus' spring, Camus' reality reduces us to witnessing our own submission under the crisis of history.

Vokzal and *NA JA* – a pair of films presented here back to back on the central wall dividing the gallery's two rooms – remain elusive in their simplicity. Shooting on 16mm in slight slow motion, I used the sprawling public space surrounding two train station complexes – first in Moscow and then New York, during the summers of 2015 and 2020 respectively – as a rubric for mapping latent social dynamics. The effects of the two films are cumulative. As a heterotopia, the station is not only a symbol of mobility but a threshold through which the cultural peripheries and economic centers of these societies converge. These social microcosms present a constellation of diverse actors passing through, working in, loitering around or policing this public zone, inside of which the cohabitation of transgression, authority and quotidian routine mirrors the fractures of social hierarchy. An entire ecology runs below the surface of these images, a before and after and beyond the frame.

If in 2015, *Vokzal*'s stark scenes of Putin's Russia served as a premonition for the rise of authoritarianism in America – a force that has come to create irreparable tears in the fabric of society – by the plague summer of 2020 this crisis had reached its apex. *NA JA* confronts us with an iteration of our world where assumptions about mobility have been retracted, a city where those with the privilege to leave have left, and those who have been left behind are reduced to a state of complete immobility. Already depicting advertisements for the arrival of a new station complex, these scenes are destined to be replaced. The new station will cater to the consumer, will be sanitized and policed, chaos having conjured control. In the interim, the city appears as a stage, the removal of commuters throwing into relief what remains – a theater populated by ungovernable parts of ourselves, aspects which, as a collective social body, we almost can't bare to see.

Bodies circling from station to station within the station. Bodies standing, lying, clothed or unclothed. Bodies which, relegated from the center to the periphery, and from the public to the private, are either desired or desperately avoided. Bodies which, forced to live out their private experience in public, implicate us. Despite our desires to freeze time, one only has to look into the mirror to understand how absolutely futile that is.

(March 24, 2022)
Leigh Ledare



List of works

1. Leigh Ledare, *Personal Commissions*, 2008/2022
10 Dry Prints on Hahnemühle paper 310 g in a portfolio
Each 100 x 70 cm
Edition of 10 numbered and signed copies and 2 AP

2. Leigh Ledare, *Vokzal*, 2016
16mm color film digitalized, audio, 58 minutes
Edition of 5

The slow-motion visuals are synced with a sound piece that incorporates a remix of Neu!'s 1973 track *Super 16*.

3. Leigh Ledare, *NA JA*, 2021
16mm color film digitalized, audio, 47 minutes 30
Edition of 5

Ledare based his film's soundtrack on Joseph Beuys' *Ja, ja, ja, ne, ne, ne*, as re-interpreted and performed by him and Paul McCarthy.

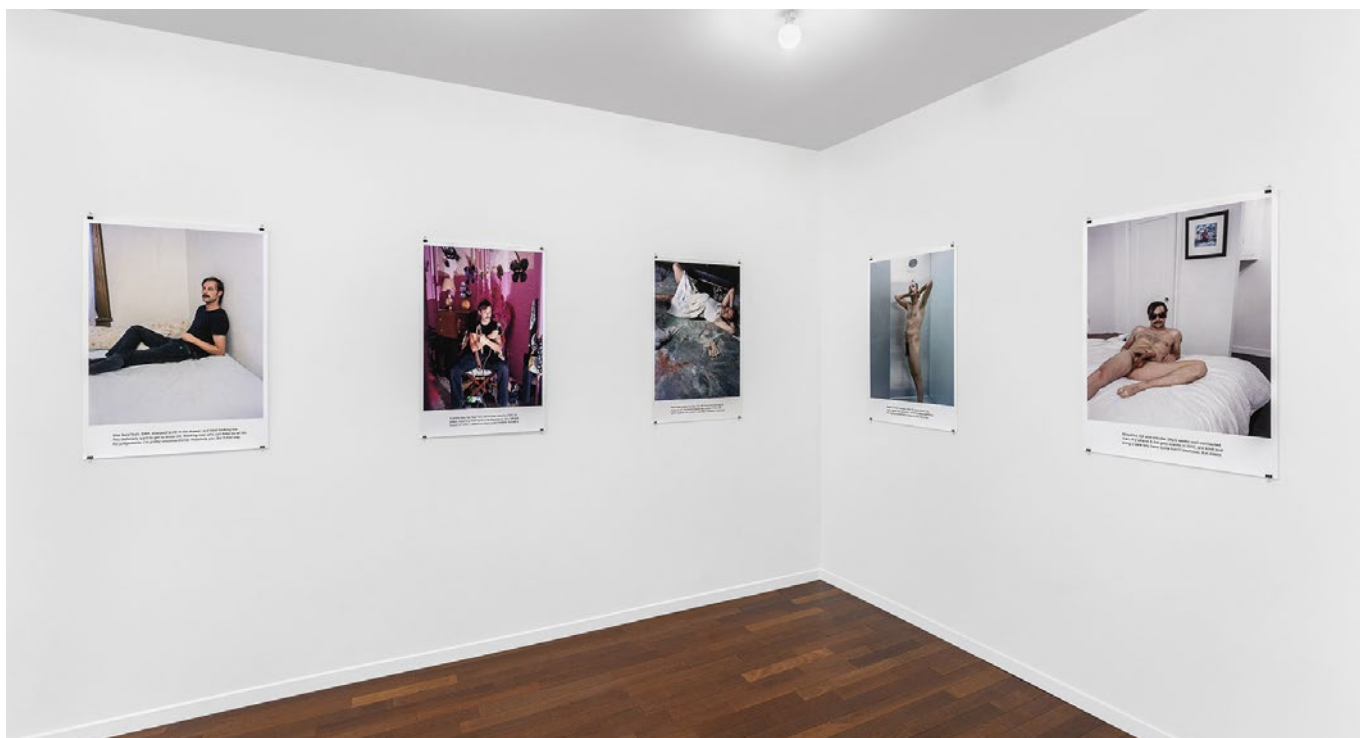
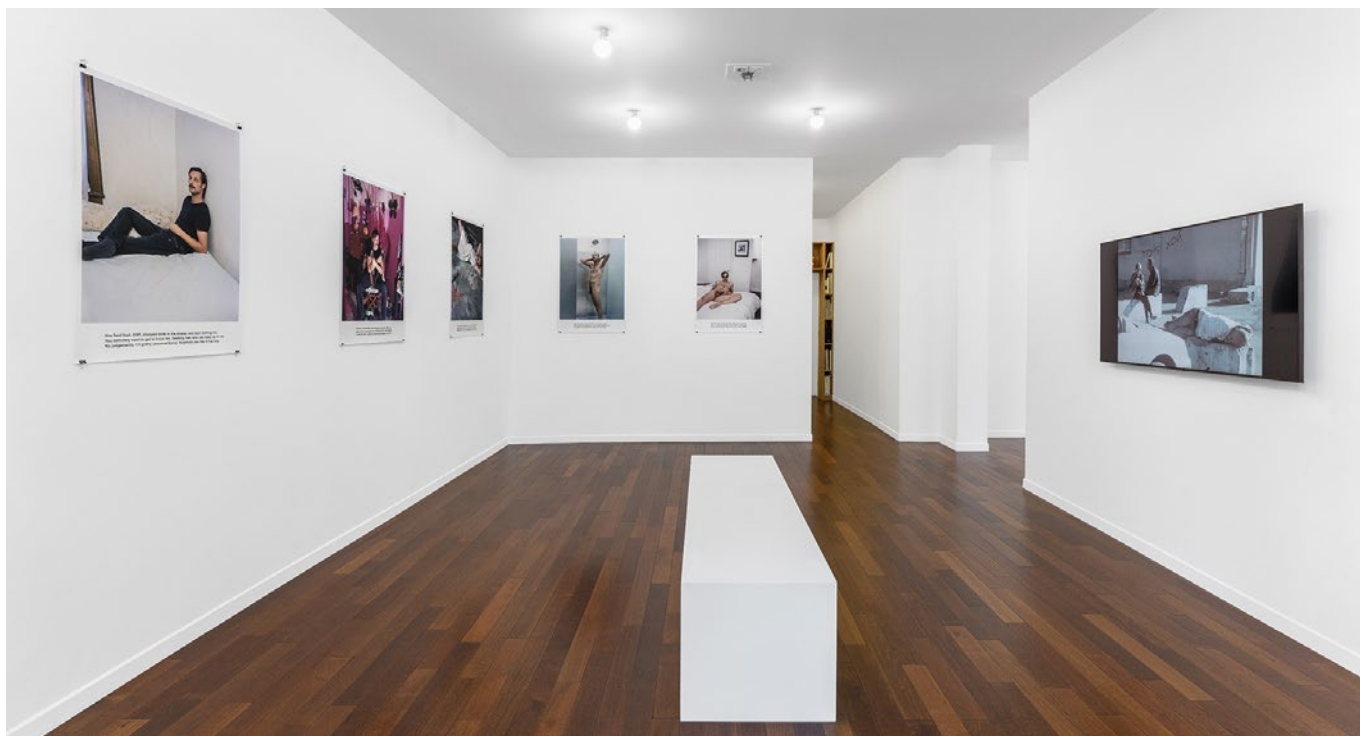
4. Suzy Lake, *Imitations of the Self (Study)*, 1973/2012
Archival inkjet print
Edition of 10

Leigh Ledare

To you who make the springtime, I send my winter

Exhibition views

Photos Nicolas Brasseur



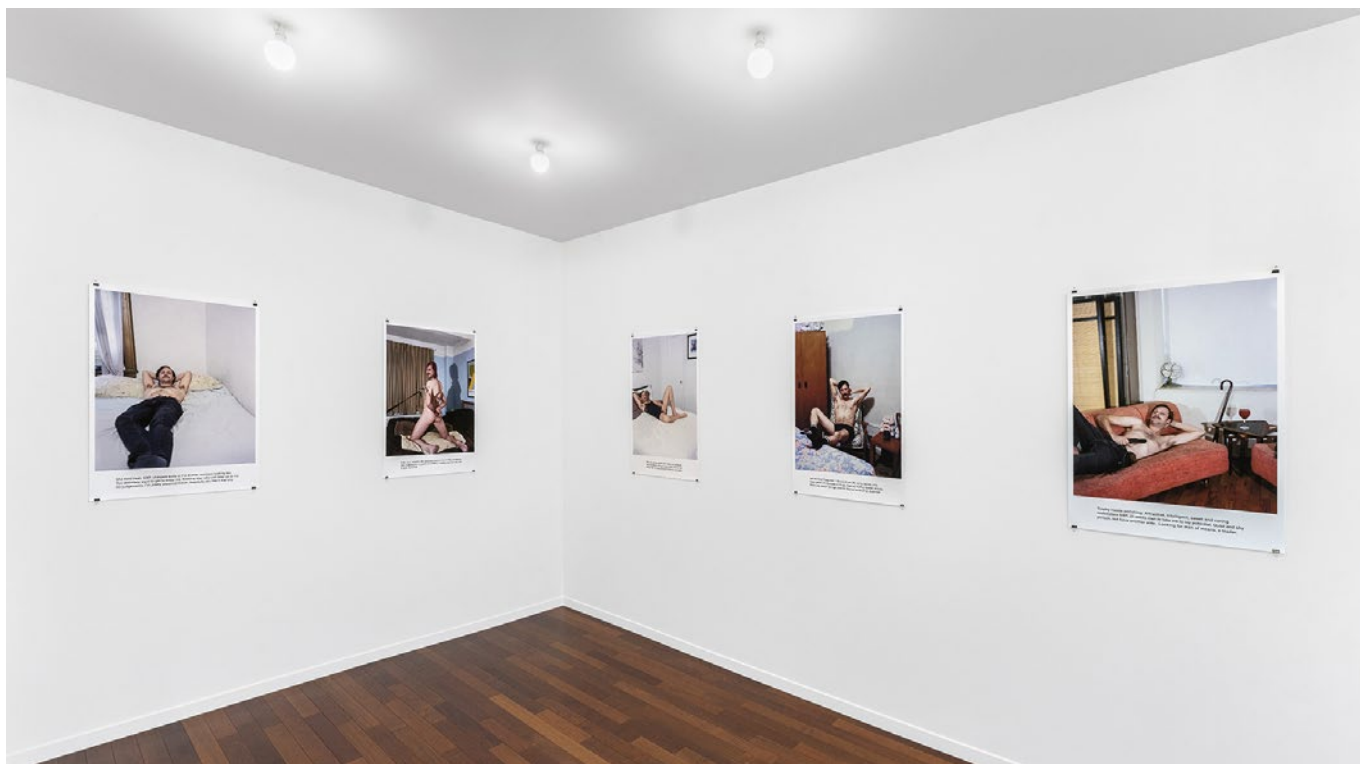
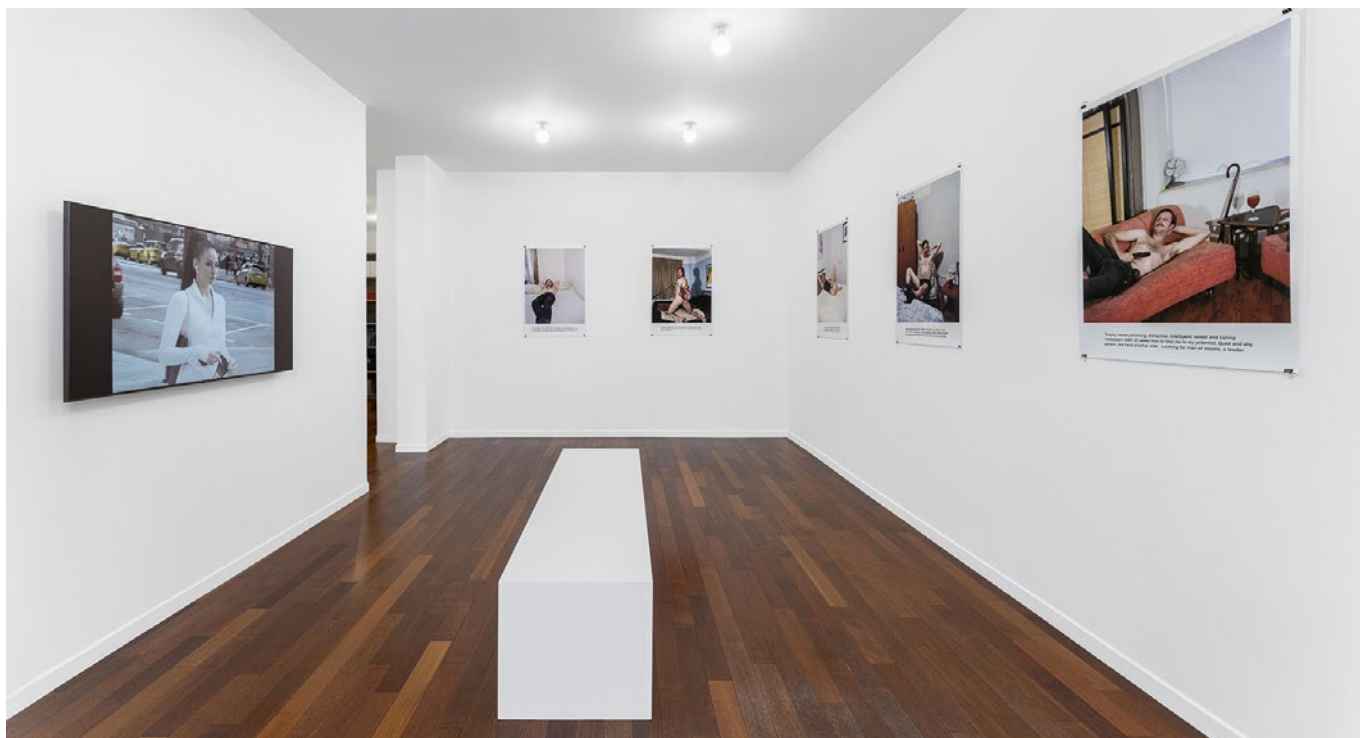
mfc-michèle didier
66 rue Notre-Dame de Nazareth, 75003 Paris, France
T + 33 (0)1 71 27 34 41 - P + 33 (0)6 09 94 13 46
info@micheledidier.com - www.micheledidier.com

Leigh Ledare

To you who make the springtime, I send my winter

Exhibition views

Photos Nicolas Brasseur



mfc-michèle didier
66 rue Notre-Dame de Nazareth, 75003 Paris, France
T + 33 (0)1 71 27 34 41 - P + 33 (0)6 09 94 13 46
info@micheledidier.com - www.micheledidier.com

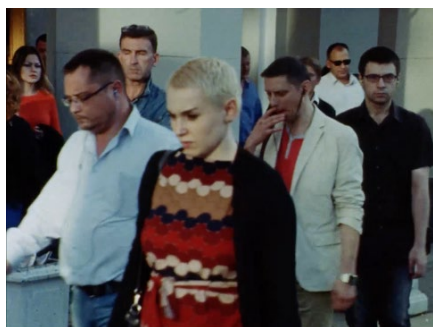
Leigh Ledare

To you who make the springtime, I send my winter



Leigh Ledare
Vokzal, 2016

16mm color film, audio
58 minutes
Edition of 5



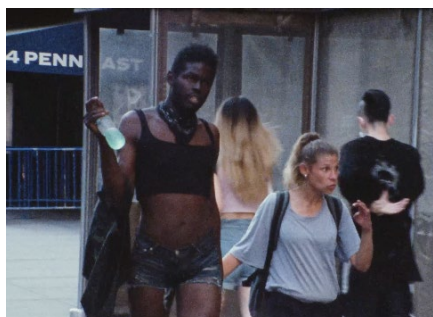
Leigh Ledare

To you who make the springtime, I send my winter



Leigh Ledare
Na ja, 2021

16mm color film, audio
47 minutes 30
Edition of 5



Leigh Ledare

To you who make the springtime, I send my winter



Let the Good Times Roll. 1 Blond, 53 yrs old, curvy, buxom, slim, clean, petite. No diseases or drugs. Seeking healthy, honest, reliable, financially secure younger man for discreet sensual fun. Ext#1084

Leigh Ledare
Personal Commissions

Specifications

10 Dry Prints on Hahnemühle paper 310 g in a portfolio
Each 100 x 70 cm
Printed by Cultura
Portfolio produced by Cultura

Production

Edition of 10 numbered and signed copies and 2
artist's proofs
Certificate numbered and signed by the artist
2008/2022
Produced and published by mfc-michèle didier in 2022

©2022 Leigh Ledare and mfc-michèle didier
NB: All rights reserved. No part of this edition may be re-
produced in any form or by any means without written
permission of the artist and the publisher.

Leigh Ledare

To you who make the springtime, I send my winter



A dream into the Real. Very sensuous, cheerful, SWF, 38, gifted, charming looking for a distinguished, very affluent hi-end art lover, a patron to share great heights. Ext#6910

Leigh Ledare
Personal Commissions

Detail of one the ten Dry Prints

A dream into the Real. Very sensuous, cheerful, SWF, 38, gifted, charming looking for a distinguished, very affluent hi-end art lover, a patron to share great heights. Ext#6910



FIRE. Sexy, beautiful WF, dominant wants a very willing, submissive who understands his place, for creative + complicated discreet play. Tribute. Ext#6795

Leigh Ledare
Personal Commissions

Detail of one the ten Dry Prints

FIRE. Sexy, beautiful WF, dominant wants a very willing, submissive who understands his place, for creative + complicated discreet play. Tribute. Ext#6795

Leigh Ledare

To you who make the springtime, I send my winter



Let the Good Times Roll. 1 Blond, 53 yrs old, curvy, buxom, slim, clean, petite. No diseases or drugs. Seeking healthy, honest, reliable, financially secure younger man for discreet sensual fun. Ext#1084

Leigh Ledare
Personal Commissions

Detail of one the ten Dry Prints

Let the Good Times Roll. 1 Blond, 53 yrs old, curvy, buxom, slim, clean, petite. No diseases or drugs. Seeking healthy, honest, reliable, financially secure younger man for discreet sensual fun. Ext#1084



Beautiful 50-ish woman looks 30, Anna Nicole type looks, seeks very generous + understanding gentleman, for ongoing friendship/relationship first. Ext.#7461

Leigh Ledare
Personal Commissions

Detail of one the ten Dry Prints

Beautiful 50-ish woman looks 30, Anna Nicole type looks, seeks very generous + understanding gentleman, for ongoing friendship/relationship first. Ext.#7461

Leigh Ledare

To you who make the springtime, I send my winter



She Said Yeah. SWF, sharpest knife in the drawer, and best looking too. You definitely want to get to know me. Seeking man who can keep up w/ me. No judgements. I'm pretty unconventional. Hopefully you like it that way.

Leigh Ledare
Personal Commissions

Detail of one the ten Dry Prints

She Said Yeah. SWF, sharpest knife in the drawer, and best looking too. You definitely want to get to know me. Seeking man who can keep up w/ me. No judgements. I'm pretty unconventional. Hopefully you like it that way.



She Said Yeah. SWF, sharpest knife in the drawer, and best looking too. You definitely want to get to know me. Seeking man who can keep up w/ me. No judgements. I'm pretty unconventional. Hopefully you like it that way.

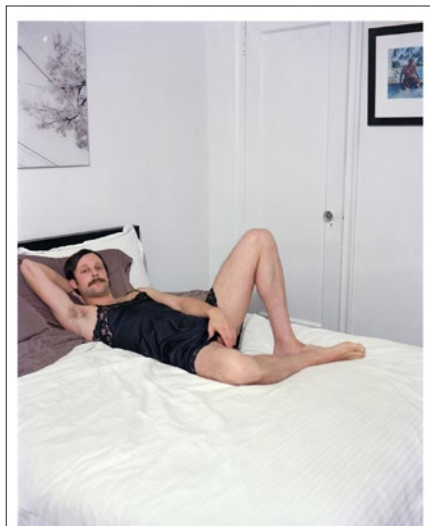
Leigh Ledare
Personal Commissions

Detail of one the ten Dry Prints

She Said Yeah. SWF, sharpest knife in the drawer, and best looking too. You definitely want to get to know me. Seeking man who can keep up w/ me. No judgements. I'm pretty unconventional. Hopefully you like it that way.

Leigh Ledare

To you who make the springtime, I send my winter



Beautiful, tall and slender 28y/o seeks well connected man. If U attend A-list gala events in NYC, are kind and bring a date lets have some fun!!! Ummmm. Ext.#4803

Leigh Ledare
Personal Commissions

Detail of one the ten Dry Prints

Beautiful, tall and slender 28y/o seeks well connected man. If U attend A-list gala events in NYC, are kind and bring a date lets have some fun!!! Ummmm. Ext.#4803



Trophy needs polishing. Attractive, intelligent, sweet and caring midwestern SWF, 25 seeks man to take me to my potential. Quiet and shy person, but have another side. Looking for man of means, a leader.

Leigh Ledare
Personal Commissions

Detail of one ten Dry Prints

Trophy needs polishing. Attractive, intelligent, sweet and caring midwestern SWF, 25 seeks man to take me to my potential. Quiet and shy person, but have another side. Looking for man of means, a leader.

Leigh Ledare

To you who make the springtime, I send my winter



Demi seeks Ashton Kutcher. Very attr single white Female 44 seeks tall attr responsible honest sexy sweet & financially stable younger man, 25-35 for possible relationship. Ext#7449

Leigh Ledare
Personal Commissions

Detail of one the ten Dry Prints

Demi seeks Ashton Kutcher. Very attr single white Female 44 seeks tall attr responsible honest sexy sweet & financially stable younger man, 25-35 for possible relationship. Ext#7449



Beautiful, tall and slender 28y/o seeks well connected man. If U attend A-list gala events in NYC, are kind and bring a date lets have some fun!!! Ummmm. Ext.#4803

Leigh Ledare
Personal Commissions

Detail of one the ten Dry Prints

Beautiful, tall and slender 28y/o seeks well connected man. If U attend A-list gala events in NYC, are kind and bring a date lets have some fun!!! Ummmm. Ext.#4803

Leigh Ledare

List of exhibitions (selection)

EDUCATION

Columbia University, MFA Visual Art 2008

Rhode Island School of Design, BFA 2000

University of Washington, 1994-1997

SOLO SHOWS (SELECTION)

2021

XX XX (with Nicolas Guagnini), Meyer Riegger Gallery. Berlin, Germany

Zurich, Office Baroque. Antwerp, Belgium

2019

L'Hôte, Office Baroque. Brussels. Belgium

2017

The Plot, The Museum of the Art Institute of Chicago. Chicago, IL

Vokzal, The Box. Los Angeles, CA

2016

place du jardin aux fleurs, Office Baroque. Brussels, Belgium

The Here and the Now, Manifesta 11 curated by Christian Jankowski, Helmhaus. Zurich, Switzerland

2015

Double Bind, Art Unlimited at Art Basel, curated by Gianni Jetzer. Basel, Switzerland

2014

Ana and Carl, and Some Other Couples (with Nic Guagnini), Max Mayer Gallery. Dusseldorf, Germany

Leigh Ledare. Mitchell-Innes and Nash. New York, NY

Ana and Carl, and some other couples (with Nic Guagnini), Andrew Roth. New York, NY.

2013

Leigh Ledare, et al. (solo survey) curated by Elena Filipovic, Kunsthal Charlottenberg. Copenhagen, Denmark

An Invitation. RECEPTION. Berlin, Germany

2012

Leigh Ledare, et al. (solo survey) curated by Elena Filipovic, WIELS. Brussels, Belgium

Double Bind Publication. Michele Didier Gallery. Paris, France

An Invitation. Pilar Corrias Gallery. London, England

Leigh Ledare, The Box. Los Angeles, CA 2011

Something Might Have Been Better than Nothing... with Per Billgren, RECEPTION. Berlin, Germany

2010

Double Bind. The Garage Center for Contemporary Culture. Moscow, Russia

Double Bind. Prix Decouvert, curated by Ruf, Obrist, Eccles, Parreno and Gillick. Les Rencontres d'Arles

Le Tit. Guido Costa Projects. Turin, Italy

The Confectioner's Confectioner, Pilar Corrias Gallery. London, England

Too Late and Later, Rod Bianco Gallery. Oslo, Norway

2009

Leigh Ledare, Les Rencontres de Arles. Arles, France

2008

You Are Nothing To Me. You Are Like Air. Rivington Arms. New York, NY

Pretend You're Actually Alive, Andrew Roth Gallery. New York, NY

GROUP SHOWS (SELECTION)

2022

Front Triennial, curated by Prem Krishnamurthy, Cleveland, Ohio

Love Songs, curated by Simon Baker, Maison Européenne de la Photographie, Paris, France

Contagion, Bengaluru Science Gallery, Bengaluru, India

2020

Faktura, KIM? Contemporary Art Centre, Riga, Latvia

2019

Acting Out (Works from the Hessel Collection), curated by Leigh Ledare and Tom Eccles, Hessel Museum, Bard College, Annondale-on-Hudson, NY

Straying from the Line, Schinkel Pavillion, Berlin, Germany

Lignes de Vies, curated by Frank Lamy, Musée d'art Contemporain du Val-de-Marne, France

Diaristic Photography and the Photobook, curated by Sarah Allen, Tate Modern, London, UK

50 Years, 50 Books: Masterworks from the Library of Martin Parr, Les Rencontres d'Arles, Arles, France

50 Years, 50 Books: Masterworks from the Library of Martin Parr, Les Rencontres d'Arles, France

On Fire, curated by Benedikt Wyss, SALTS Birsfelden, Basel, Switzerland

Empathy Clinic, University of New South Wales, Sydney, Australia

2018

Measures of Authority, with Chris Kraus and Terence Sellers, Hessel Museum, Bard College, Annondale-on-Hudson.

Group Therapy, Frye Art Museum. Seattle, WA. September 15th

Defacement, The Club. Tokyo, Japan. July

Frieze New York, The Box Gallery, with Stan Vanderbeek, New York

Putting Out, Gavin Brown Enterprises, New York, June

Smiles Without Freedom, curated by Rirkrit Tiravanija and Tomas Vu, Neiman Gallery, Columbia University, NY

Leigh Ledare

List of exhibitions (selection)

2017

The Whitney Biennial (curated by Christopher Lew and Mia Locks), The Whitney Museum of American Art, New York

Roberte Ce Soir: Pierre Klossowski, Schinkel Pavillon, Berlin, Germany

Anna and Carl, and Some Other Couples, Sammlung Philaria Collection, Dusseldorf, Germany

Vocales, CAC Bretigny, France

The Public Body, Artspace, Sydney, Australia

Feedback, Marlborough Chelsea, New York

2016

Give Me Yesterday, Foundation Prada, Milan, Italy

The Here and the Now (screening curated by Laura McClean Ferris), The Swiss Institute, New York

An Invitation, Sammlung Philara Collection, Dusseldorf, Germany

Bread and Roses, Artists and the Class Divide (curated by Natalia Seilewicz), MoMA Warsaw, Poland

Private Exposure, Sammlung Olbricht Collection, Berlin, Germany

LOVE, Neiman Gallery, Columbia University, New York

Invisible Adversaries: Valie Export (curated by Tom Eccles and Lauren Cornell), Hessel Museum of Art, Bard College, Annandale-on-Hudson, NY

Manifesta 11 (curated by Christian Jankowski), Zurich, Switzerland

2015

Kyiv Biennial, School of Realism (curated by John Miller), Kiev, Ukraine

Art Unlimited at Art Basel (curated by Gianni Jetzer), Basel, Switzerland

Sexe, Beatitude et Logique Comptable, Michele Didier, Paris, France

Sitter, Columbus College of Art and Design, Columbus, OH

Between Strength and Crisis, LENTOS Kunstmuseum, Linz, Austria

2014

Boys Don't Cry, Musée D'art Contemporain du Val-de-Marne, France.

La Vie Domestique, Parc Saint Leger Centre D'Art Contemporain, Pougues-les-Eaux, France

It Happens Without You, Kendall Koppe Gallery, Glasgow, Scotland

Paperwork: A Brief History of Artists' Scrapbooks, ICA, London, England

Simulacrum (with Pierre Klossowski and Dan Graham), Max Mayer Gallery, Dusseldorf, Germany

Bad Conscience (curated by John Miller), Metro Pictures Gallery, New York

Layers Thaw, Minerva Gallery, Sidney, Australia

2013

Home Truths (curated by Susan Bright) *Photographers' Gallery*, London, England

Paperwork: A Brief History of Artists' Scrapbooks, PS1/MoMA, New York

5th Moscow Biennale (special Project curated by Ami Barak, Pomeranz Collection), Moscow, Russia.

News/Prints: Printmaking & The Newspaper, International Print Center, New York

9 Ways to Say It's Over, Farringdon St., London, England

Revelations, Stonescape (curated by Thea Westreich and Susan Modica), Calistoga, CA

Museum of Modern Art and Western Antiquities: Lens Drawings (curated by Jens Hoffman), Marian Goodman Gallery, Paris, France

Lips Painted Red, Trondheim Kunstmuseum, Trondheim, Norway.

Secession Secession (curated by Colby Bird), Fitzroy Gallery, New York

Paperwork: A Brief History of Artists' Scrapbooks, Andrew Roth Gallery, New York

Nevermore, On Stellar Rays Gallery, New York

2012

The Hidden Mother (curated by Sinziana Ravini), Hotel Particulier de B. Morisot, Paris, France

Privacy (curated by Martina Weinhart), Shirn Kunsthalle, Frankfurt, Germany

Collaborations and Interventions, Kunsthalle Andratx, Majorca, Spain

Take Off Your Silver Spurs and Help Me Pass the Time, Galerie Ruzicka, Salzburg, Austria

Fremde Überall, Pomeranz Collection, The Jewish Museum, Vienna, Austria

Desire, Bergen Museum of Art, Bergen, Norway

New Americans 2 (curated by Ami Barak), Michel Rein Gallery, Paris, France

2011

Reprise (curated by LaToya Ruby Fraser), Rutgers University, New Brunswick, NJ

Sex Drive, Atlanta Museum of Art, Atlanta, Georgia

Martin Parr's Best Books of the Decade, National Photographic Archive, Dublin, Ireland

A Hole Is to Dig, Office Baroque Gallery, Antwerp, Belgium

Cult of the Ruin: Strategies of Accumulation, UC Irvine, Irvine, CA

LAXART Curator's Choice Video Show, LAXART, Los Angeles, CA

Sex Drive, Haverford College, Haverford, PA.

Home Videos, Leigh Ledare and Kenneth Tam, Loisaïda, New York

2010

How Soon Is Now, The Garage CCC, Moscow, Russia

Which Witch is Which? (curated by Ajay Kurian), White Flag Projects, St. Louis, MO

Luma Discovery Award (curated by Ruf, Obrist, Eccles, Gillick, Parreno). Les Rencontres d'Arles.

Greater New York 2010 (curated by Cornelia Butler, Klaus Biesenbach, Neville Wakefield), MoMA/PS1, New York

Leigh Ledare

List of exhibitions (selection)

No More Presence, Leigh Ledare and Corinne Jones, Gresham's Ghost, New York

They Have Not the Art to Argue with Pictures: After Heineken, Cherry and Martin, Los Angeles, CA

Support Group, Thomas Solomon Gallery, Los Angeles, CA

So Be It: Interventions in Printed Matter, Andrew Roth Gallery, New York

Leigh Ledare screenings, Berkeley Museum of Art, Berkeley, CA

2009

I'm So Sad, My God (curated by Martha Kirtzenbaum), ISCP, New York

Dance, Sons and Daughters, Dance! The Physics Room, Christchurch, New Zealand

Selected Works (curated by Laurie Simmons), Foundation for Contemporary Arts, New York
Prague Biennale 4, Prague, Czech Republic

Re-Gift (curated by John Miller), Swiss Institute, New York

House Call (curated by Alex Gardenfeld and Piper Marshall), Three's Company, New York

Ca Me Touche (curated by Nan Goldin), with Boris Mikhailov, Arles, France

N-1, Patino Foundation, Santa Cruz, Bolivia

Frieze Art Fair (Leigh Ledare and Reena Spaulings), Greene Naftali booth, London, England

2008

Freeway Balconies (curated by Nancy Spector, Collier Schorr), Deutsche Guggenheim, Berlin, Germany

Open Secret, International Center of Photography, New York

Closer Now, Rivington Arms, New York

Columbia University MFA Thesis Show, Fischer-Landau Center, New York

EPSOLP (curated by Chris Johanson), Small a Projects, Portland, OR

LECTURES, SCREENINGS (SÉLECTION)

2022

KASK School of Arts (artist talk and screening of *The Task*), Ghent, Belgium

2020

Kunstakademie Düsseldorf (artist talk and conversation with Christopher Williams)

2019

THE BOX (four screenings of *The Task* on two consecutive weekends, and conversation with Catherine Taft), Los Angeles, CA

UPenn screening series (co-curator) (*The Task*, screening and conversation with Homay King)

University of New South Wales (*The Task*, screening and symposium, Empathy Clinic), Sydney, Australia

BAM (screening of *The Task* for Triple Canopy's *On Resentment*), BAM Rose Cinema, Brooklyn, NY

Yale University (Artist talk and screening of *The Task*), New Haven, CT

Whitney Museum of American Art, conversation on Andy Warhol moderated by Lynne Tillmann, with Elizabeth Schambelan, Cy Gavin, Justine Kurland, New York, NY

Rijksakademie (screening of *The Task*), Amsterdam, Netherlands

Hessel Museum/Bard CCS (conversation with Lynn Tillmann and Lyle Ashton Harris on *Acting Out* curated by Leigh Ledare and Tom Eccles), Bard College, Annondale-on-Hudson, NY

2018

SPACE (*The Task* screening and conversation), Portland, ME

Sheffield Documentary Festival (screening of *The Task*), Sheffield, England

Bard Center for Curatorial Studies (with Selby Nimrod), Bard College, Annondale-on-Hudson, NY

BAM Cinema Fest (screening of *The Task*), Bam Rose Cinema, Brooklyn, NY

American Academy Rome (screening of *The Task*), Rome, Italy

Paris Photo, Paris, France, Conversation between Leigh Ledare and Laure Prouvost

Frye Art Museum, Seattle, WA

California Institute of the Arts, Valencia, CA

Lomex Gallery, New York, Conversation between Leigh Ledare and Lynne Tillmann

Princeton University, Princeton, NJ

Pratt Institute, Brooklyn, NY

True/False film festival (screening of *The Task*), Columbia, MO

School of Visual Arts, New York, NY

Georgia State University, Atlanta, GA

Atlanta Contemporary, Atlanta, GA

2017

The Museum of the Art Institute of Chicago, Chicago, IL

School of Visual Arts, New York, NY

Yale University, New Haven, CT

2016

The Speaker with Vanessa Place and Jamieson Webster, James Fuentes Gallery, New York, NY

Cranbrook Academy, Bloomfield Hills, MI

Columbia University, New York, NY

Zurich University of the Arts, Zurich, Switzerland

Friends of Manifesta talk. Zurich Kunsthall, LUMA Foundation, Zurich, Switzerland

2015

Wesleyan University, Middletown, CT

Barnard College, New York, NY

Yale University, New Haven, CT

Paris Photo, conversation with Jeff Rosenheim, Elisabeth Bronfen and Donatien Grau, Paris, France

The Box, Los Angeles. Double Bind book release and Conversation with Anastas, Liz Kotz and Andrew Freeman.

Leigh Ledare

List of exhibitions (selection)

Bard College, Annandale-on-Hudson, NY

Leigh Ledare and Paul McCarthy moderated by
Chrissie Iles, Frieze Art Fair, New York, NY

San Francisco Institute of Art, San Francisco,
CA

Printed Matter Book Fair, PS1/MoMA, talk with
Andrew Roth and Vincent Aletti. New York, NY.

Artists Space Books + Talks, book release and
conversation with Rhea Anastas, John Miller, Daniel
Bozhkov, K8 Hardy and Leigh Ledare, New York, NY

2014

Paris Photo, LA. Conversation with Frances
Stark, moderated by Douglas Fogel, Los Angeles,
CA

Princeton University, Princeton, NJ

Aperture Foundation/Parsons lecture series,
New York, NY

School of Visual Arts, New York, NY

State Academy of Arts and Design, Stuttgart,
Germany

New York City Public Library, moderated by
Christophe Cherix, with Andrew Roth, Alex
Kitnick, Phil Aarons

Panel on Robert Heineken moderated by
curator Eva Respini, New York, NY 2013

Charlottenborg Kunsthall, conversation
with Mette Sandby and Per Aage Brandt),
Copenhagen, Denmark

Charlottenborg Kunsthall (in conversation with
Elena Filipovic), Copenhagen, Denmark

Rhode Island School of Design. Providence, RI

2012

WIELS Center for Contemporary Culture,
Brussels, Belgium

School of the International Center of
Photography, New York, NY

Columbia University, New York, NY

Yale University, New Haven, CT

Pratt Institute, Brooklyn, NY

2011

The Garage Center for Contemporary Art in
conversation with Tom Eccles. Moscow, Russia

California Institute of the Arts, Valencia, CA

University of Southern California. Los Angeles,
CA

Rutgers University, New Brunswick, NJ

2009

Les Rencontres de Arles, conversation with Nan Goldin,
JH Engstrom and Anders Petersen. Arles, France

GRANTS

2017

John Simon Guggenheim Memorial Foundation
Fellowship

Ruttenberg Foundation Fellowship, The
Museum of the Art Institute of Chicago

2013

New York Foundation for the Arts Fellowship
Award

2009

Jerome Foundation Research Grant

COLLECTIONS (SELECTION)

Museum of Modern Art, New York

Museum of the Art Institute of Chicago

The Whitney Museum of American Art, New York

Museum of Contemporary Art, Los Angeles

Hessel Museum of Art, Bard College,
Annandale-on-Hudson, New York

Institute of Contemporary Art Miami

Centre Pompidou, Paris, France

Fotomuseum Winterthur, Switzerland

San Francisco Museum of Modern Art

mfc-michèle didier

mfc-michèle didier, founded in 1987 in Brussels by Michèle Didier, is an independent publishing house. mfc-michèle didier produces and publishes original artworks by contemporary artists such as artist's books, prints, installations, multiples, etc.

Since 2011, the mfc-michèle didier in Paris represents artists of different generations, related to the editions produced by the publishing house, but also develops specific projects with particular invitations. Since its creation, the gallery has favored collaborations with artists in a conceptual and political vein, notably international artists who are now considered historical. The Paris gallery also supports artists from the French scene through the production of works and exhibitions.

ARTISTS

AALLIICCEELLEESS...	PIERRE HUYGHE
SAÂDANE AFIF	ON KAWARA
DENNIS ADAMS	MATT KEEGAN
CARL ANDRE	JUTTA KOETHER
FIONA BANNER	LEIGH LEDARE
ROBERT BARRY	SUZY LAKE
BERNARD BAZILE	CHRISTIAN MARCLAY
SAMUEL BIANCHINI	LAURENT MARISSAL
BLESS	ALLAN MCCOLLUM
MEL BOCHNER	MATHIEU MERCIER
BROGNON ROLLIN	ANNETTE MESSENGER
AA BRONSON	GUSTAV METZGER
STANLEY BROUWN	JOHN MILLER
PHILIPPE CAZAL	JONATHAN MONK
LUDOVIC CHEMARIN©	ROBERT MORRIS
CLAUDE CLOSKY	ANTONI MUNTADAS
HANNAH COLLINS	MAURIZIO NANNUCCI
DAVID CUNNINGHAM	PHILIPPE PARRENO
CHARLES DE MEAUX	MICHELANGELO PISTOLETTO
BRACO DIMITRIJEVIC	HUBERT RENARD
PETER DOWNSBROUGH	ALLEN RUPPERSBERG
JEAN-BAPTISTE FARKAS	CLAUDE RUTAULT
YONA FRIEDMAN	RAY SANDER
JAZON FRINGS	JOE SCANLAN
PAUL-ARMAND GETTE	KLAUS SCHERÜBEL
LIAM GILICK	CAROLEE SCHNEEMANN
NICOLAS GIRAUD	JIM SHAW
CARI GONZALEZ-CASANOVA	JOSH SMITH
JOSEPH GRIGELY	UNTEL
FERENC GRÓF	LAWRENCE WEINER
THE GUERRILLA GIRLS	ELSA WERTH
CARSTEN HÖLLER	MARTHA WILSON
JENNY HOLZER	CHRISTOPHER WOOL

PARIS

mfc-michèle didier

66 rue Notre-Dame de Nazareth
75003 Paris, France
Phone: +33 (0)1 71 27 34 41
www.micheledidier.com

Open from Tuesday to Saturday, from 12am to 7pm
Subway: Strasbourg Saint-Denis, Arts et Métiers,
République and Temple

Simon Poulain

simon@micheledidier.com
info@micheledidier.com

BRUXELLES

mfc-michèle didier

19 rue de la Senne
1000 Bruxelles, Belgique
Phone : +32 (0)2 374 75 98
www.micheledidier.com

Open from Monday to Friday, from 9am to 5.30pm
By appointment only

Benedetta Grazioli

benedetta@micheledidier.com
info@micheledidier.com

CURRENT AND UPCOMING EXHIBITIONS

Leigh Ledare

To you who make the springtime, I send my winter
From March 24 to May 21, 2022

Saâdane Afif

The Fountain Archives [Index]
From June 2 to July 21, 2022

Art Basel

From June 16 to 19, 2022

Suzy Lake

Fall 2022